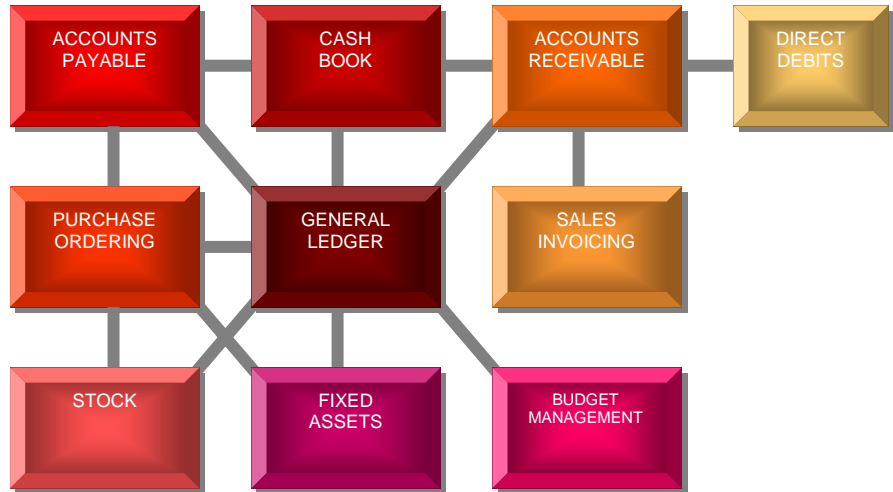


Agresso (formerly known as Distinction) has been supplying financial management systems to the FE sector since 1992. Agresso QL Finance (Agresso QLF) has been around since 1997 and is used by almost 100 institutions throughout England and Wales. In addition to being education-specific, Agresso QLF possesses a number of attributes which make it particularly relevant for FE colleges today.

Agresso QLF is designed as a standard packaged solution, offering colleges the flexibility to tailor its deployment to their own particular needs via a range of parameters. This approach enables a uniform version of Agresso QLF to be in use across the whole sector, with all the advantages this brings for the quality of software and user support. The schematic opposite indicates the full range of functionality available.



## Integrated Solution

Agresso QLF consists of a range of integrated modules, all of which share a common database. The modular structure of the software allows the full implementation to take place over an extended period if required, without losing any of the advantages of ultimate integration. Regardless of where data is entered, all parts of the system are updated simultaneously so that data is synchronised in real time. The ability to drill into a transaction in any module to find related transactions elsewhere is a major benefit that users appreciate from this fully integrated approach.

Integration is also available with the other Agresso QL systems for student and personnel/payroll management. The integrated management of student debts and payments is a particular benefit in the college sector today especially with the additional financial requirements for EMA and learner support funds to be managed. Integration with Agresso QL Personnel & Payroll ensures that a full analysis of pay costs is processed automatically each period with no additional data processing required.

## Key Features

- ◆ Agresso QLF is a mid-range, multi-user finance system designed to support devolved budgetary control and commitment accounting within an integrated database environment.
- ◆ The system is designed to satisfy the detailed accounting requirements of core users and to enable a degree of self-service by users outside the finance department. This is particularly relevant for devolved purchase ordering and e-procurement functionality.
- ◆ Optimised access to information using functionality and technology that is appropriate to each user's needs and capabilities. A unique blend of Windows and browser-based access is available.

Finance systems are designed to record and report the financial position and in the broadest sense to inform decisions with financial implications at all levels within the college. As such, the modern financial management system needs to address the requirements of core finance users and a range of users outside finance including budget holders, line managers and departmental administrators. Agresso QLF has been designed specifically to provide appropriate access to all relevant users.

Department	Summary Inc/Exp	Detail Inc/Exp	GL Code	Dr Movement	Cr Movement	Commitment	Budget	Variance
01 - Administration	010 - Income	0100 - Training	1.01.010.0100		2,472.50	946.36	20,000.00	196,581.14
01 - Administration	010 - Income	0200 - Consultancy	1.01.010.0200		180,350.00		590,000.00	409,650.00
01 - Administration	010 - Income	0300 - Development	1.01.010.0300				12,000.00	12,000.00
01 - Administration	010 - Income	0400 - Administration	1.01.010.0400		5,537.00			5,537.00
01 - Administration	010 - Income	0500 - Departmental Excursions	1.01.010.0500		1,937.36		6,000.00	4,062.64
01 - Administration	010 - Income	0600 - Deposits	1.01.010.0600				20,000.00	20,000.00
01 - Administration	020 - Expenditure	----	1.01.020.----	31.72		317.25		348.97
01 - Administration	020 - Expenditure	0100 - Training	1.01.020.0100				10.00	10.00
01 - Administration	020 - Expenditure	0200 - Consultancy	1.01.020.0200	634.38				644.38
01 - Administration	020 - Expenditure	0400 - Administration	1.01.020.0400	3,973.62		334.88	6,000.00	1,691.50
01 - Administration	020 - Expenditure	0500 - Departmental Excursions	1.01.020.0500	285.00				285.00
01 - Administration	020 - Expenditure	1300 - Printing	1.01.020.1300	141.00			24,000.00	23,859.00
01 - Administration	020 - Expenditure	1500 - Stationery	1.01.020.1500	3,554.95		22.38	1,200.00	2,332.57
01 - Administration	020 - Expenditure	2000 - Salary	1.01.020.2000				480,000.00	480,000.00
01 - Administration	020 - Expenditure	2800 - IT Purchases	1.01.020.2800				6,462.50	6,462.50
01 - Administration	030 - Purchases of Services	0200 - Consultancy	1.01.030.0200	3,419.38		4,500.25	6,000.00	1,919.63
01 - Administration	040 - Operating Expenses	----	1.01.040.----				3,000.00	3,000.00
01 - Administration	040 - Operating Expenses	0400 - Administration	1.01.040.0400	234.25		1,056.00		1,290.25
01 - Administration	050 - Overheads	1100 - Telephones	1.01.050.1100	1,750.00			24,000.00	22,250.00
01 - Administration	050 - Overheads	1400 - Postage	1.01.050.1400	42.55				42.55

Columns can be:  

- sorted
- sized
- moved

Expert users within finance will appreciate the power and flexibility provided by the Workbench desktop interface and the ability to construct views to suit the broad range of tasks involved. Ad-hoc reporting has never been so easy.

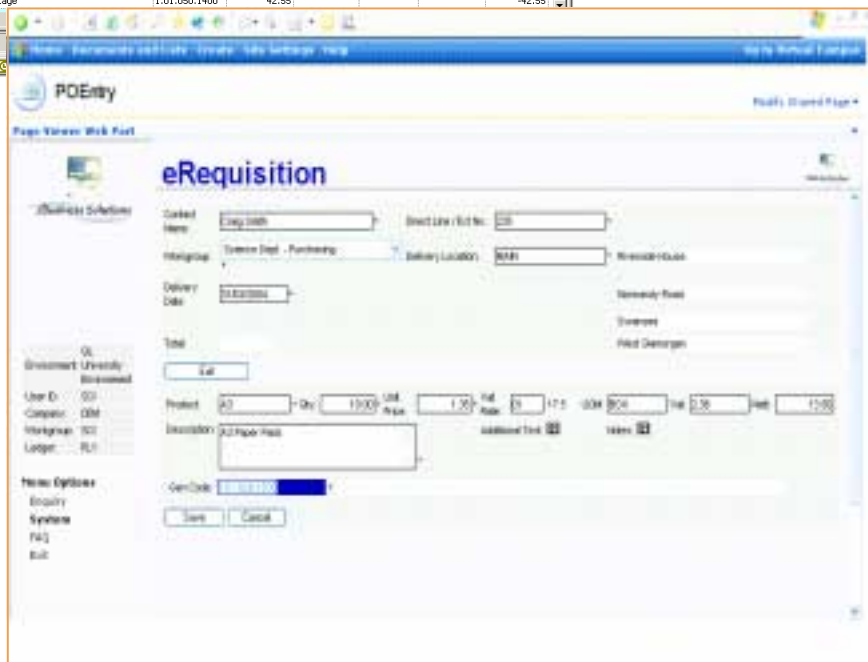
### Controlled access

The workgroup security system ensures that access to Agresso QLF can be distributed to a wide range of users in the most appropriate way. Menus, screen layouts and business rules within the core system can all be amended to suit the requirements and capabilities of different users.

### E-Business

There is no question that that the advent of the Internet and organisation-specific Intranets has established Web technology as a potent way of delivering Information access to a much wider audience than had previously been considered practical or worthwhile.

The optional Agresso QLF Web Portal provides browser-based access to a range of functionality in a way that is particularly appropriate for occasional users across the college.



*Agresso has set as its commercial mission the delivery of financial management solutions to its customers on an ongoing basis. This involves enhancements to core functionality in addition to the provision of new technology to allow colleges to respond confidently to the challenges and opportunities that continue to emerge.*

